

Since 2006

An ISO 9001:2015 Certified Company



TULJA

ENTERPRISES

Total Solution in Painting & Powder Coating

Tulja insure 100% Compliance
Reduce VOC levels | Improved Health & Safety | Increased Sustainability

We Ideate, Innovate, Reinvent Continuously



Ist Plant - 31,204 sq.ft

IInd Plant - 53,800 sq.ft

IIIrd Plant - 10,760 sq.ft

Qualified And Experience : 28 Staff Employees



- Plot No E-124/1, E124/4 & E126 MIDC waluj, Aurangabad Maharashtra

- Plot No C-2/1 MIDC Chakan, Pune Maharashtra



+91-9158898082 | +91-9960600290 | +91-9158181144



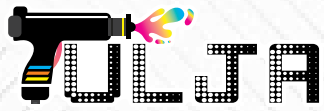
info@tulja.co.in



Website: www.tuljacoating.com



Click Here to Watch Our Company Profile



OUR VISION

Becoming the leading provider of innovative, sustainable, and high-quality painting and powder coating solutions, known for exceptional customer service and a commitment to environmental responsibility.

The company could aim to be a one-stop solution for all painting & powder coating needs of industrial applications.

OUR MISSION

Providing high-quality painting and powder coating services, exceeding customer expectations, and building lasting relationships with clients. To be the most trusted and reliable painting and powder coating company, known for our exceptional craftsmanship, attention to detail, and commitment to customer satisfaction.

To be the leading provider of professional painting and powder coating services, known for our commitment to quality, reliability, and customer satisfaction.

Mrs- Aruna. Kadam
(MD Tulja Enterprises)





Tulja Enterprises is a sole proprietorship registered company It was founded by **Mr.Balkrishna Ramchandra Kadam** in 2006. The company's corporate office is in Aurangabad, Maharashtra. It is a surface coating unit and has both spray painting and powder coating facilities.

SPRAY PAINTING & POWDER COATING SHOP

Automated Process: Conveyorized systems automate the entire spray painting & powder coating process, from Coating to curing, reducing manual labor and increasing throughput.

High Volume Capacity: Designed to handle large volumes of components, making them ideal for mass production.

Consistent Coating Quality: The automated nature ensures consistent coating thickness and quality across all parts.

Efficiency and Productivity: The continuous flow of parts through the plant maximizes efficiency and output.

Durable Finish: Spray painting & Powder coating provides a durable, corrosion-resistant, and aesthetically pleasing finish.



SPRAY PAINTING & POWDER COATING SHOP

Pre-treatment Stage: Includes cleaning, degreasing, and surface preparation of the parts before coating.

Powder Coating Booth: Where the powder coating is applied using electrostatic attraction.

Curing Oven: Heated oven where the powder coating is melted and fused onto the part.

Conveyor System: The heart of the system, transporting parts through each stage.

Control System: Automated system to manage conveyor speed, powder application, and oven temperature.



Ferrous & Non Ferrous Pre-Treatment

Ferrous Metals Pre-Treatment

1. Phosphate coating: Iron phosphate or zinc phosphate coatings are commonly used to enhance paint adhesion and corrosion resistance.
2. Alkaline cleaning: Removes dirt, grime, and oils from the surface.
3. Acid etching: Removes rust and scale, creating a clean surface for coating.

Non-Ferrous Metals Pre-Treatment

1. Chromate conversion coating: Used for aluminum, zinc, and other non-ferrous metals to enhance corrosion resistance and paint adhesion.
2. Alodine treatment: A chromate-based treatment for aluminum alloys.
3. Deoxidizing: Removes oxidation and surface impurities.
4. Specialized cleaners: Used to remove dirt, grime, and oils without damaging the metal surface

Key differences

1. Coating type: Ferrous metals often use phosphate coatings, while non-ferrous metals use chromate or other specialized coatings.
2. Etching and cleaning: Ferrous metals may require acid etching, while non-ferrous metals require gentler cleaning methods.
3. Surface preparation: Non-ferrous metals often require more precise surface preparation to prevent damage or contamination.

Applications

1. Aerospace: Pre-treatment for aluminum, titanium, and other non-ferrous alloys.
2. Automotive: Pre-treatment for steel, aluminum, and other metals used in vehicle manufacturing.
3. Industrial: Pre-treatment for various metals used in equipment, machinery, and construction.



Tulja Understand
Risk And Responsibilities
Towards Your Components
Painting And Powder Coating

Complete Technical Support



OUR MANAGEMENT



Mrs- Aruna. Kadam
(Chairman Tulja Group)



Mr B R. Kadam
(Founder CEO)



Mr. Swapnil kadam
(Plant Head)



**Chittaranjan
Narwade**
(Operation Head)



Kailas Pawar
(Production Head)



Suraj | Manoj | Vishal
Walmik | Mangate



Nikhil kadam
(QA & NPD)



Chanchal | Tanuja
Ayushi | Megha



Shriram Kadam
(Maintenance Head)



Bhikan | Rajkamal



Amol Tajne
(Account Head)



Akash | Navnath



Mahendra Patil
(Development)



Tushar | Akhade



Nitin Chavan
(Store Head)



Jadhav | Bhagwat

OUR CERTIFICATIONS

- MSME Registration Certificate (Factory Registration)
- MPCB Registration Certificate (Consent to Operate)
- ISO 9001 : 2015

APPRECIATIONS

- 'GOLD' category Award by Siemens Ltd. (3 years in a row).
- 'Good Quality' Award by Endress + Hauser Flowtec India Pvt. Ltd.
- Quality & Delivery Performance Award by Hyosung T&D India Pvt Ltd



OUR PRECIOUS CUSTOMERS

Tier 1



Tier 2



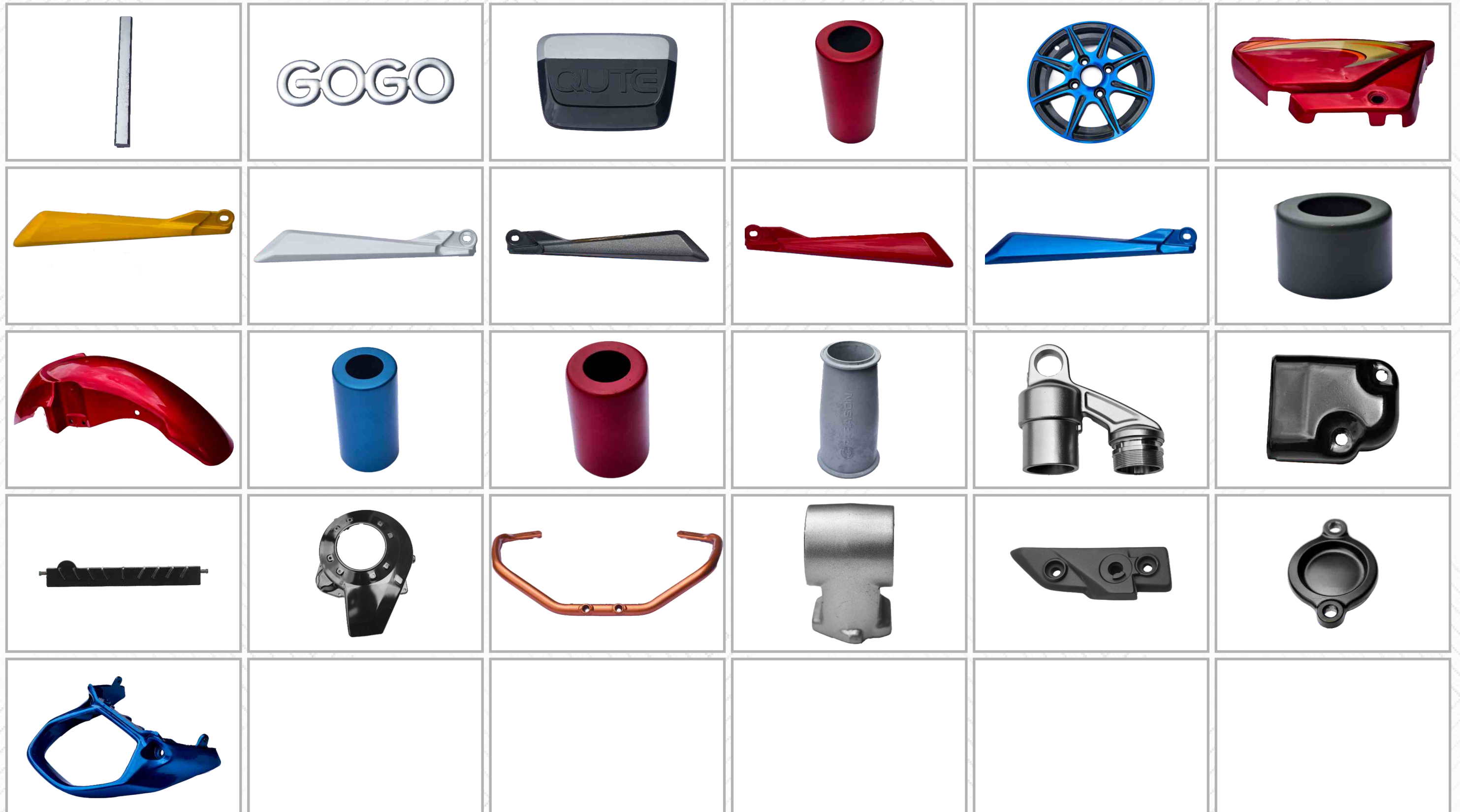
Painted Products



Painted Products



Painted Products



Powder Coated Products



Powder Coated Products



In House Testing Lab (All Units)



Our Lab Instruments



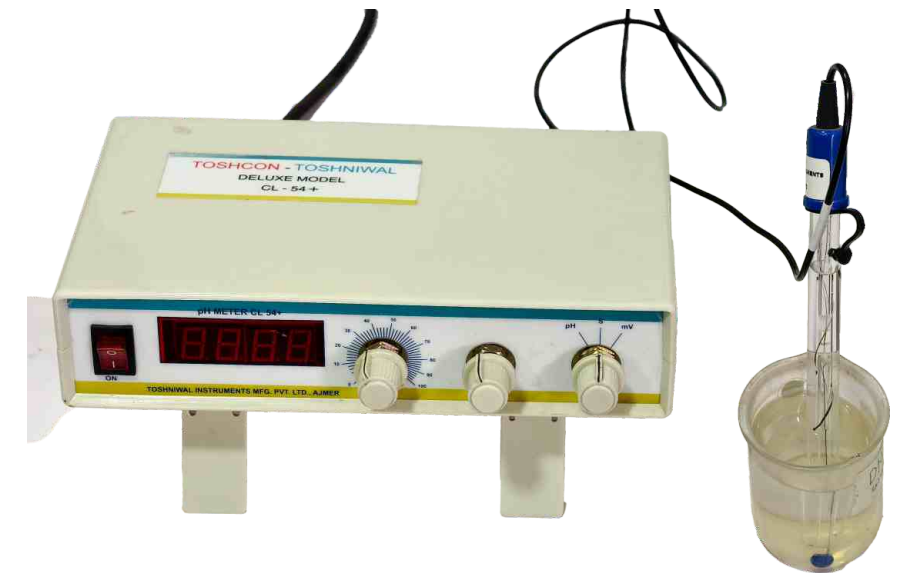
DFT METER

A DFT (Dry Film Thickness) meter is an instrument used to measure the thickness of a dry film painted & coated substrate. (ferromagnetic, non-ferromagnetic, or non-metallic).



GLOSS METER

A gloss meter is an instrument used to measure the gloss level of a surface, typically in terms of Gloss Units (GU).



pH METER

Digital pH meters are essential tools for measuring the acidity or alkalinity of pre-treatment water/chemical tanks.

Our Lab Instruments



WEIGHING MACHINE

A weighing machine, also known as a scale or balance, is a device used to measure the weight or mass of an object.



MINI ANEMOMETER

An anemometer is a device used to measure wind speed and direction.



BEND TESTER

A coating bend tester is a laboratory instrument used to evaluate the flexibility and adhesion properties of coatings, paints, and varnishes on metal substrates.

Our Lab Instruments



HOT PLATE

A hot plate is a common laboratory equipment used for heating, stirring, and mixing various substances.



LUX METER

A lux meter is a device used to measure the amount of light in a given area, typically in units of lux (lx).



PENCIL HARDNESS

Pencil hardness is a test method used to evaluate the scratch resistance of coatings. The pencil hardness scale ranges from 6B (softest) to 9H (hardest).

Our Lab Instruments



TDS & EC METER

Digital TDS meters are essential tools for measuring the Total Dissolved Solids (TDS) in water, indicating its purity and quality.



PORTABLE pH METER

Portable pH meters are essential tools for measuring the acidity or alkalinity of pre-treatment water/chemical tanks. Provide immediate pH readings for quick decision-making. Portable pH meters are compact, lightweight, and easy to use.



MAGNIFYING GLASS

A lab magnifying glass is a simple yet essential tool used in various laboratory. Enhance experiences by allowing to observe small defects of painted or coated.

Our Lab Instruments



ADHESION TESTERS

Paint adhesion testers are instruments used to evaluate the adhesion properties of paints and coatings on various substrates



SST CHAMBER

A Salt Spray Test (SST) Chamber, also known as a Salt Fog Chamber, is used to evaluate the corrosion resistance of materials, coatings, and products in a controlled environment.



HOT WATER TESTER

A Hot Water Tester is used to evaluate the performance and durability of painting & powder coatings in hot water environments

Our Lab Instruments



IMPACT TESTER

Impact Tester is used to evaluate the impact resistance and durability of painting & powder coatings on various substrates



RA TESTER

An Ra tester, also known as a surface roughness tester or profilometer, is used to measure the surface roughness of materials.

MORE INHOUSE TEST

- Resistance to Acid
- Resistance to Alkali
- Resistance to Gasoline
- Resistance to Oil
- Resistance to Grease
- Resistance to Water



UPCOMING PROJECT

A conveyORIZED powder coating plant is an automated system designed for efficient, high-volume powder coating of various components. It utilizes a conveyor system to move items through powder application Booth, and curing Oven, stages, resulting in a durable, long protective life, and attractive finish. This type of plant is particularly well-suited for industries like automotive, aerospace, and industrial equipment manufacturing.

1. Converyorised - CED with Powder Coating -
Location - Aurangabad Maharashtra (Year 2026)

2. Converyorised - CED with Powder Coating -
Location - Chakan Pune Maharashtra (Year 2027)

3. Converyorised - Industrial Spray Painting-
Location - Aurangabad Maharashtra (Year 2026)